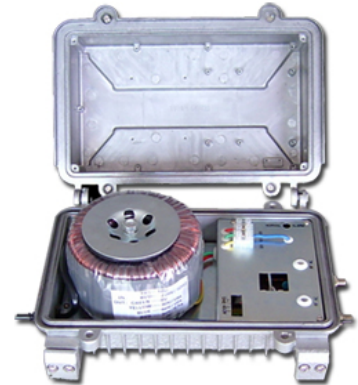


Power

for your cable and communications systems...

Solutions

FYGD-F Series CATV Power Supply



- High performance toroidal transformer
- Input and output protection, lightning surge protection
- Current limited output and short-circuit protection
- Automatic restart upon removal of short
- Field selectable output voltage*
- Powder coated enclosure for outdoor applications
- Cable mount installation
- 5/8" female output connections
- Durable LED indicators
- Embedded Power Inserter (EPI)

* This feature is only available on certain models.



Similar products (from L to R): FYGD-C, FYGD-MS-C, FYGD-E.

FYGD-F Series CATV Power Supply

Nominal Specifications

Model ¹	Input voltage (VAC) ²	Input frequency (Hz)	Input fuse protection (A)	Output voltage (VAC)	Output current (A)	Output power (VA)	Net Weight (kg/lbs)
FYGD-F60-3A-W	220	50	5	60	3	180	4.5/9.9
FYGD-F60-6A-L	120 or 220	60	8	60	6	360	5.5/12.1
FYGD-F60-6A-W	220	50	8	60	6	360	5.5/12.1
FYGD-F90-6A-L	120 or 220	60	8	90	6	540	7/15.4
FYGD-F60-8A-L	120 or 220	60	8	60	8	480	6/13.2
FYGD-F60-8A-W	220	50	8	60	8	480	6/13.2
FYGD-F60-10A-W	220	50	8	60	10	600	7.2/15.9
FYGD-F6090-10A-W	220	50	8	60/90 ³	6.6/10	600	7.2/15.9
FYGD-F6090-10A-L	120 or 220	60	8	60/90 ³	6.6/10	600	7.2/15.9

1. Please see Ordering Information in next page for details about the model definition.
2. Input voltages of 100VAC 60Hz, 110VAC 60Hz, 115VAC 60Hz, 120VAC 60Hz, 220VAC 60Hz, 230VAC 50Hz and 240VAC 50Hz are available also. Please contact us directly for details.
3. Output voltage of the model is field selectable.
4. Both input voltage and output voltage can be customized. Please contact us for details.
- 5.

General Specifications

Input

Voltage range	±15%
Power factor	>0.90 at full load

Output

Waveform	Sine wave
Protection	Current limited 150% of max. current rating
Efficiency	≥85%

Embedded Power Inserter

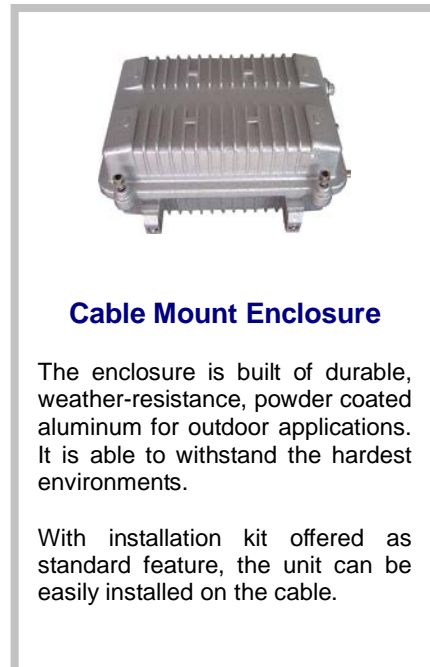
Bandwidth	860MHz
Flatness	± 0.5dB□
Insertion loss	1.5dB (860MHz)
Return loss	16dB

Mechanical

Output connections	5/8" female
Finish	Powder coated
Material	Aluminum alloy
Dimensions	< 540VA models 245x205x110mm 9.6"x8.0"x4.3" ≥ 540VA models 305x240x120mm 12.0"x9.4"x4.7"

Environmental

Operating temperature	-40°C to 55°C / -40°F to 131°F
Operating humidity	0 to 95% non-condensing



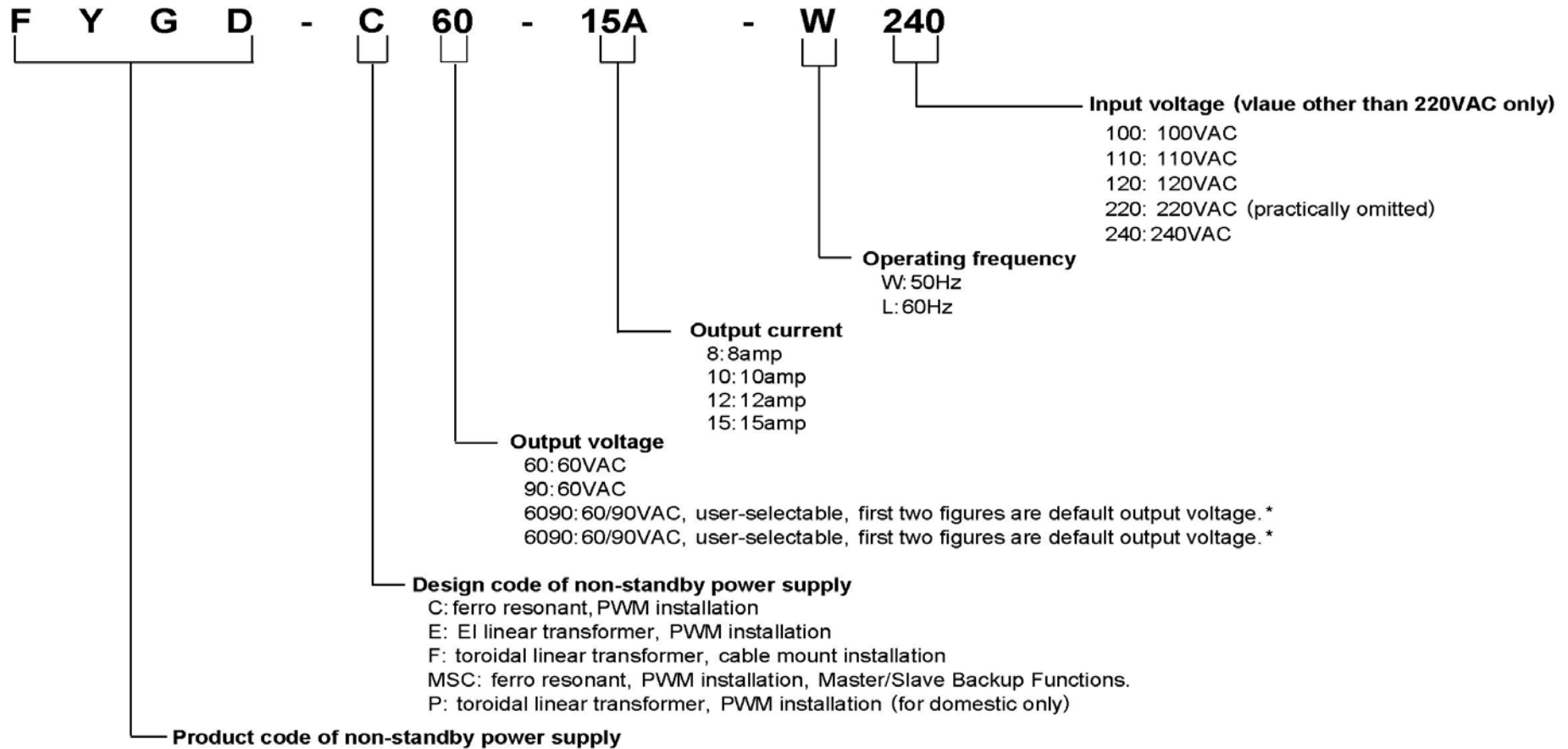
Cable Mount Enclosure

The enclosure is built of durable, weather-resistance, powder coated aluminum for outdoor applications. It is able to withstand the hardest environments.

With installation kit offered as standard feature, the unit can be easily installed on the cable.

FYGD-F Series CATV Power Supply

Ordering Information / Model Definition



* Default output voltage is used to verify maximum output power of the unit. Examples: FYGD-C6090-15A-L120, 900VA; FYGD-C9060-15A-L120: 1350VA.

NOTE: output voltage of the unit is not always set to the default before delivery. Always verify output voltage of the unit before feeding to the loads.

Fangyuan Electric Apparatus Co., Ltd

Weixu S.Road, Anqiu, Weifang, Shandong Province, P.R.China-262100

Tel: +86-536-4328089 +86-536-4329233 Fax: +86-536-4329121

E-mail: fydq@fydq.com.cn

[Http://www.fydq.com.cn](http://www.fydq.com.cn)

Due to continuing improvement of the products, Fangyuan Electric Apparatus Co., Ltd reserves right to change layout, design and configuration of the power supply and make changes to information contained in this document without notice. FYDQ and the stylized logo are registered trademarks of Fangyuan Electric Apparatus Co., Ltd. Copyright © 2015. All rights reserved.

